

INSPECTION

1. INSPECT FRONT WIPER AND WASHER SWITCH CONTINUITY

w/ Mist:

Switch Position	Tester Connection	Specified Condition
MIST	7 – 17, 16 – 17	Continuity
OFF	7 – 16	Continuity
LO	7 – 17	Continuity
HI	8 – 17	Continuity
Washer ON	2 – 11	Continuity

w/ Intermittent:

Switch Position	Tester Connection	Specified Condition
OFF	7 – 16	Continuity
INT	7 – 16	Continuity
LO	7 – 17	Continuity
HI	8 – 17	Continuity
Washer ON	2 – 11	Continuity

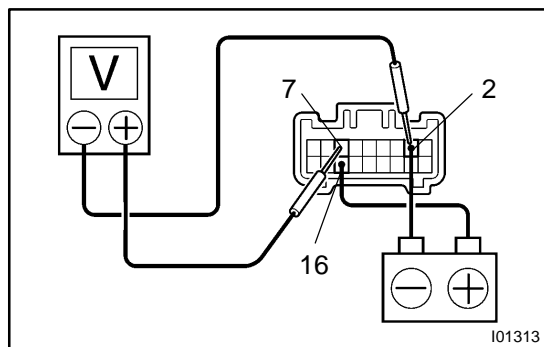
If the continuity is not as specified, replace the switch.

2. INSPECT INTERMITTENT OPERATION

- Turn the wiper switch to the INT position.
- Turn the intermittent time control switch to the FAST position.
- Connect the positive (+) lead from the battery to terminal 16 and the negative (–) lead to terminal 2.
- Connect the positive (+) lead from the voltmeter to terminal 7 and the negative (–) lead to terminal 2, check that the meter needle indicates battery positive voltage.

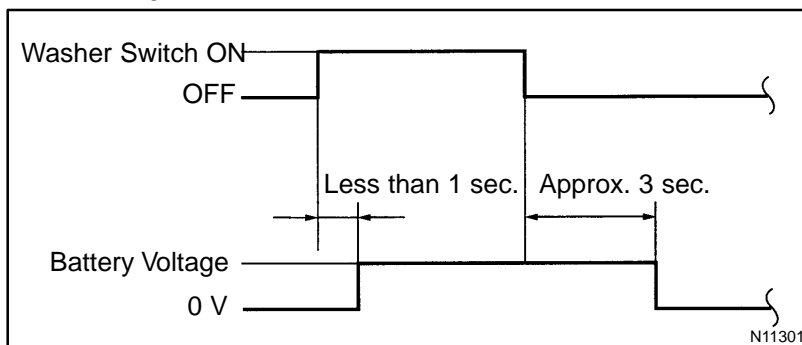
INT time control switch position	Voltage
FAST	Approx. 1 to 3 sec. Battery positive voltage 0 V
SLOW	Approx. 10 to 15 sec. Battery positive voltage 0 V

If the result is not as specified, replace the switch.

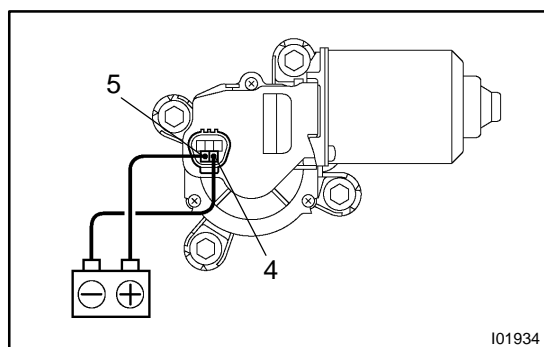


3. INSPECT WASHER LINKED OPERATION

- Connect the positive (+) lead from the battery to terminal 16 and the negative (–) lead to terminal 2.
- Connect the positive (+) lead from the voltmeter to terminal 7 and the negative (–) lead to terminal 2.
- Push in the washer switch, and check that the voltage changes as shown in the table below.



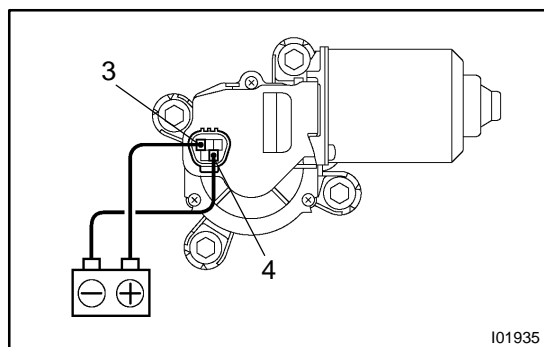
If the operation is not as specified, replace the wiper and washer switch.



4. Low speed:

INSPECT WIPER MOTOR OPERATION

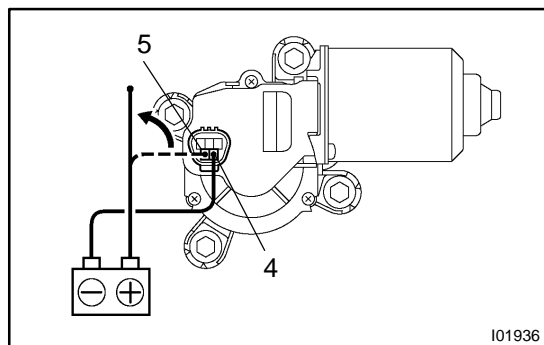
Connect the positive (+) lead from the battery to terminal 5 and the negative (–) lead from the battery to the motor body or terminal 4, and check that the motor operates at low speed. If operation is not as specified, replace the motor.



5. High speed:

INSPECT WIPER MOTOR OPERATION

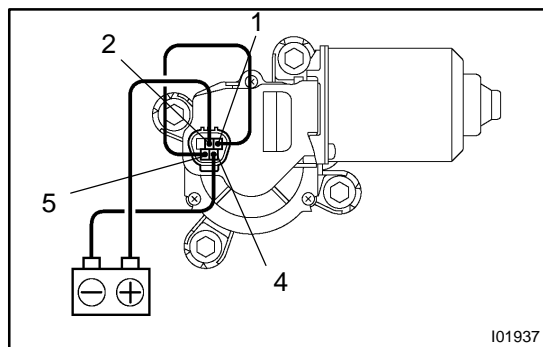
Connect the positive (+) lead from the battery to terminal 3 and the negative (–) lead from the battery to the motor body or terminal 4, and check that the motor operates at high speed. If operation is not as specified, replace the motor.



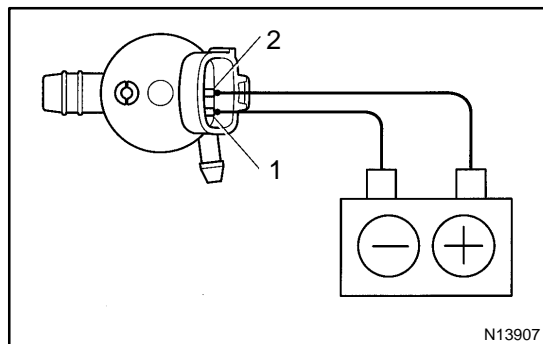
6. Stopping at stop position:

INSPECT WIPER MOTOR OPERATION

- Operate the motor at low speed and stop the motor operation anywhere except at the stop position by disconnecting the positive (+) lead from terminal 5.



- (b) Connect terminals 1 and 5.
- (c) Connect the positive (+) lead from the battery to terminal 2 and the negative (–) lead from the battery to the motor body or terminal 4, and check that the motor stops running at the stop position after the motor operates again. If operation is not as specified, replace the motor.



7. INSPECT WASHER MOTOR OPERATION

Connect the positive (+) lead from the battery to terminal 2 and the negative (–) lead to terminal 1, and check that the motor operates.

NOTICE:

These tests must be performed quickly (within 20 seconds) to prevent the coil from burning out.

If operation is not as specified, replace the motor.